

сарфи, ёнилғи-мойлаш материаллари сарфи 20-42% га камаяди ҳамда тупроқнинг табиий унумдорлиги ошади.

### АДАБИЁТЛАР

1. Худаяров Б.М., Саримсаков Б.Р., Ҳасанов Ж.Қ. Комбинациялашган агрегатнинг технологик ва конструктив параметрларини аниқлаш // Агро илм журналі №4 (54) сон. ISSN 2091-5616 – Тошкент 2018 йил, 96–97 бетлар.
2. Саримсаков Б.Р. Комбинациялашган агрегатнинг ғўзаполярни эзиб-бўлаклайдиган тишли ғалтаги параметрларини асослаш: Дис. техн. фан. фалс. докт. –Тошкент, 2021. – 119 б.
3. Яшева Е.Я. Исследование технологии измельчения и компостирования стеблей хлопчатника / Вопросы механизации и электрификации сельского хозяйства: Труды САИМЭ. – Ташкент, 1981. – вып. 21. – С.108–115.
4. Яшева Е.Я. Исследование технологии измельчения и компостирования стеблей хлопчатника // Труды САИМЭ. Вып. 21. Ташкент: 1981. С.108-115.
5. Муҳаммаджонов М., Зокиров А. Ғўза агротехникаси. –Тошкент: Мехнат, 1995. – Б. 219–228.

УДК 662.472

### ANALYSIS OF SOLAR HEATING MODES WITH FLAT REFLECTORS AND WATER HEAT STORAGE

**Imomov Shukhrat Boymamatovich** - PhD in Engineering Sciences,

E-mail: [shbimomov@mail.ru](mailto:shbimomov@mail.ru) [ORCID ID 0000-0002-2112-7487](https://orcid.org/0000-0002-2112-7487)

Karshi Institute of Irrigation and Agrotechnology of the National Research University  
"Tashkent Institute of Irrigation and Agricultural Mechanization Engineers."

*Мақолада шимол томонда ўрнатилган қуёш рефлекторлари тизими билан бинони қуёш ва қўшимча иситиш режимлари келтирилган.*

**Калит сўзлар:** бино; шимолий йўналиш; рефлектор, иситиш режими, инсоляция.

*The article presents the modes of solar and additional heating of a building with a system of solar reflectors installed on the north side.*

**Keywords:** building; northern orientation; reflectors, heating mode, insolation.

Currently, there is a wide variety of solar heating systems (SHS). The choice of a constructive solution for the SHS is determined by many factors: radiation and meteorological resources of the region, thermal and hydrodynamic and economic indicators. Both water and air SHS have positive and negative sides. The determining factor in the use of air SHS, for all their disadvantages, is their simplicity and low cost. Standard heat loss  $Q_{sl}^{st}$  indoors are determined based on average long-term data:

$$Q_{sl}^{st} = K_{br} (t_{in}^{st} - t_{ex}^{st}) F_{ocp} ; \quad (1)$$

where  $t_{in}^{st}$  and  $t_{ex}^{st}$  - standard temperature of indoor and outdoor air, °C.

As  $t_{in}^{st}$  a comfortable temperature is accepted  $t_{in}^{st} = 20$  °C,  $t_{ex}^{st}$  - average perennial outdoor air.

Actual heat loss  $Q_{hl}^{ac}$  indoors are determined by the formula [1]

$$Q_{hl}^{ac} = \varphi_{hl} Q_{sl}^{st} ; \quad (2)$$

where  $\varphi_{hl}$  – coefficient of actual heat loss:

$$\varphi_{hl} = (t_{in}^{st} - t_{ex}^{ac}) / (t_{in}^{st} - t_{ex}^{st}); \quad (3)$$

where  $t_{ex}^{ac}$  - actual outdoor temperature, °C.

The heating season starts on condition

$$Q_p \leq Q_{hl}^{ac}. \quad (4)$$

The proportion of solar radiation relative to heat loss is determined by the replacement coefficient:

$$f = Q_p / Q_{hl}^{ac}. \quad (5)$$

Coverage of heat losses in the room is provided by the intake of solar radiation and an additional heat source. Additional heating  $Q_{he}$  is determined by the condition of covering the actual heat loss and the receipt of solar radiation:

$$Q_{he} + Q_p = Q_{hl}^{ac} \quad (6)$$

From here

$$Q_{he} = K_{st} (Q_{hl}^{ac} - Q_p); \quad (7)$$

where  $K_{st} = 1 \dots 1,5$  – safety factor.

With solar heating, heating mode is carried out intermittently. During the period of heat shortage (at  $t_{in} < 20^0 C$ ), heating is provided due to the accumulated heat  $Q_{ah}$  and an additional heat source  $Q_{he}$ .

Heating period  $\tau_o$  consists of the battery life  $\tau_{de}$  (detente) and the operating time of the additional heat source [2]  $\tau_{ad}$ :

$$\tau_{he} = \tau_{de} + \tau_{ad}. \quad (8)$$

The daily  $\tau_{da}$  heating operation mode is

$$\tau_{he} + \tau_{pa} = \tau_{da} = 24h; \quad (9)$$

where  $\tau_{pa}$  – pause when there is no heating, at  $t_{in} > 20^0 C$ .

Heating duration is expressed as a fraction of the daily period

$$\gamma_{dh} = \tau_{he} / \tau_{da} \quad (10)$$

The average daily heating capacity is determined from the equation

$$Q_{he}^{av} = \tau_{hp} Q_{he}. \quad (11)$$

From here

$$Q_{he}^{av} = \gamma_{dh} Q_{he} \quad (12)$$

To ensure a normal temperature in the room, the condition is necessary

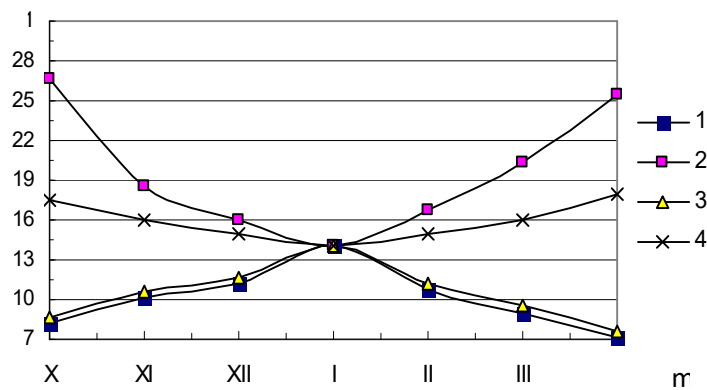
$$Q_{pa} - Q_{he}^{av} = Q_{hl}^{ac} \quad (13)$$

Condition (13) can be used to determine the heating duration

$$\gamma_{dh} = \frac{Q_{he}^{av}}{Q_{he}} = \frac{Q_{hl}^{ac} - Q_p}{Q_{he}} = \frac{\varphi_{hl} Q_{hl}^{ex} - Q_p}{K_z (Q_{hl}^{ac} - Q_p)} \quad (14)$$

Accumulation time  $\tau_{at}$ , excess heat from solar radiation, coincides with the period of no heating  $\tau_{pa}$ .

In fig. 1 shows the average monthly daily room heating mode.



Drawing. 1. Average monthly room heating mode: 1 and 2 - periods of the beginning and end of heating  $\tau_{he}$ ; 3 and 4 - the period of the beginning and end of heat accumulation  $\tau_{at}$

Heating  $\tau_{he}$  is provided up to line 1 and above line 2 (heat deficit coverage). There is no heating  $\tau_{pa}$  during the time between lines 1 and 2. This period is the of heat accumulation  $\tau_{at}$  - the period between lines 3 and 4. The accumulation mode above line 4 is impractical, since after line 4, the accumulated heat is cooled prematurely.

**1 mode.** During the period of insolation, a large excess of solar radiation occurs and the air temperature in the room significantly exceeds the standard value  $t_{in} \gg t_{in}^{st} = 20^{\circ}C$ . Decrease of indoor air temperature to  $t_{in}^{st} \approx 20^{\circ}C$  provided with active aeration and ventilation of the room, as well as active accumulation of excess solar heat  $\tau_{ah}$ . At night, a short period of heat occurs and the room temperature drops below the standard value  $t_{in} < t_{in}^{st}$ . Lack of heat at night  $\tau_{in}$  replenished only by heat  $Q_a$ , accumulated in the daytime. This regime is observed in October and April.

**2 mode.** During the period of insolation, there is an excess of solar radiation, the air temperature in the room exceeds the standard value  $t_{in} > t_{in}^{st}$ . During this period, it is necessary to actively accumulate excess solar heat  $\tau_{ah}$  and ensure that the room temperature drops to  $t_{in}^{st}$ . At night, the resulting heat deficit reduces the room temperature below the standard value  $t_{in} < t_{in}^{st}$ . Due to the heat accumulated during the daytime  $Q_{ah}$  and additional heat source  $Q_{he}$  its deficit at night is compensated  $\tau_o$ . This regime prevails in November, February and March.

**3 mode.** During the period of insolation, there is no excess heat of solar radiation, the air temperature does not exceed the standard value  $t_{in} < t_{in}^{st}$ . During the day, it is necessary to replenish the heat deficit  $\tau_o$  due to additional heat source  $Q_{he}$ . This regime is observed in December and January.

Perimental studies show that after the maximum value of the air temperature at the outlet of the SC  $t_{oc}$  (after 13 h), as a result of the temperature drop  $t_{oc}$ , heat is transferred from the upper layers of the packing to the lower layers. Further, a general decrease in the heat accumulator temperature occurs, which leads to a premature cooling of the accumulated heat. On the basis of experimental data, it was found that the temperature of the air coming from solar collector in heat accumulator, falls below the maximum value  $t_{oc}$  (at 13 o'clock) by 87 ... 90% (at 14 ... 16 hours), further heat accumulation is ineffective as the mass-average temperature of the heat accumulator begins to drop. Fuel consumption for additional heating is determined by the formula

$$B_{ad} = Q_h \cdot K_{st} / Q_h^n \eta_k ; \tag{15}$$

where  $K_{st}$  – fuel reserve factor equal to 1,1...1,2;  $Q_h^n$  - lower heat of combustion of fuel (natural gas) [3],  $kJ / m^3$ ;  $\eta_k$  – efficiency of the heating installation, for gas fuel 0.8. Fuel savings due to solar heating are determined by the following condition:

$$B_s = B_{hl} - B_{ad} ; \quad (16)$$

where  $B_{hl}$  – fuel consumption for heat losses,  $m^3$

Fuel (gas) savings for the heating season is 58%. Electricity consumption for the operation of the fan for pumping air in the heating system is determined by the periods of accumulation  $\tau_a$  and heating  $\tau_o$ , in accordance with formulas (8) and (9). With air flow in the system  $G = 0,17m^3 / s = 612m^3 / s = 612m^3 / s$ ; system pressure loss  $\Sigma\Delta P=110$  Pa the installed power of the fan motor is  $N_{ins} = 118kWt$ . We accept axial fan VO 4M 300-220/50: performance  $G = 300...1650m^3 / h$ , total pressure  $\Delta P=110$  Pa, rotation frequency  $n = 1340rev / min$ , engine power  $N = 0,12kWt$ , with speed regulator. Electricity consumption for ventilation during the heating season is  $W_v = 490kWt \cdot h / y$ . Energy consumption for ventilation accounts for 9.3% of solar and auxiliary heating energy.

**Summary.** Saving fuel (gas) for the heating season is 58%. Electricity consumption for ventilation is  $W_v=490$  kW/year, energy for ventilation is 9.3% of solar and additional thermal energy.

**Хулоса.** Иситиш мавсуми учун ёқилғи (газ) тежаш 58% ни ташкил қилади. Вентиляция учун электр энергияси сарфи  $W_v=490$  кВт/йил, шамоллатиш учун энергия харажатлари куёш ва қўшимча иситиш энергиясининг 9,3% ни ташкил қилади.

#### LITERATURE

1. Виглин Е.С. Тепловой режим малоэтажных домов при периодическом отоплении. //Системы вентиляции, отопления и теплоснабжения. –М.: 1985, №4, С.89-104.
2. Имомов Ш.Б., Ким В.Д. Экспериментальное исследование теплового режима здания с системой рефлекторов, устанавливаемых с северной стороны. //Гелиотехника. –Ташкент: Фан, 2009, №2, С. 30-33
3. Теплотехнический справочник. Том 1. –М.: Энергия, 1975, -774 с.